

2528/105
2922/105
HUMAN ECOLOGY AND ECONOMICS
June/July 2019
Time: 3 hours



THE KENYA NATIONAL EXAMINATIONS COUNCIL
DIPLOMA IN ENVIRONMENTAL SCIENCE AND TECHNOLOGY
MODULE I

HUMAN ECOLOGY AND ECONOMICS

3 hours

INSTRUCTIONS TO CANDIDATES

You should have the following for this examination:

answer booklet;

non-programmable scientific calculator.

This paper consists of TWO sections; A and B.

Answer ALL the questions in section A and any THREE questions from section B in the answer booklet provided.

Each question in section A carries 4 marks while each question in section B carries 20 marks.

Maximum marks for each part of a question are as indicated.

Candidates should answer the questions in English.

This paper consists of 4 printed pages.

Candidates should check the question paper to ascertain that all the pages are printed as indicated and that no questions are missing.

SECTION A (40 marks)

Answer ALL questions in this section.

1. Explain the importance of ethics to a society. (4 marks)
2. State any four ways of acquiring values in a society. (4 marks)
3. Explain any two negative influences on children living in urban centres. (4 marks)
4. State any four factors that have led to increased production in agricultural sector in Kenya. (4 marks)
5. List any four mitigating measures of unplanned urbanization. (4 marks)
6. With the aid of a labelled diagram, describe how the government of Kenya can reduce the cost push inflation. (4 marks)
7. State four advantages of locating a firm near the source of raw materials. (4 marks)
8. Figure 1 shows the current demand for petrol. With the aid of a labelled new demand curve on figure 1, explain the effect of a fall in the price of cars on demand for petrol. (4 marks)

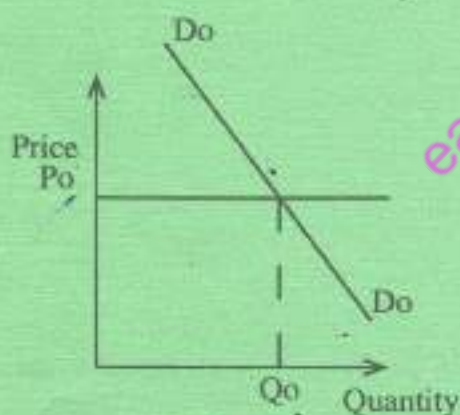


Figure 1

9. Classify each of the following activities as either primary, secondary or tertiary:
 - (a) planting crops; (1 mark)
 - (b) sewing clothes; (1 mark)
 - (c) grinding maize; (1 mark)
 - (d) harvesting honey. (1 mark)

10. Explain the effect of each of the following factors:

- (a) rise on demand of coffee on supply of tea; (2 marks)
- (b) decrease on price of cars on supply of petrol. (2 marks)



SECTION B (60 marks)

Answer any **THREE** questions from this section.

11. (a) (i) Define the term 'religion'. (2 marks)
- (ii) Explain any **three** ways in which religion influences ethics. (6 marks)
- (b) Use Maslows pyramid to explain the human hierarchy of needs. (12 marks)
12. (a) (i) Define 'human ecology'. (2 marks)
- (ii) Explain **five** benefits that accrue to the society when it studies human ecology. (10 marks)
- (b) Explain any **four** factors that increase the efficiency of workers in an organization. (8 marks)
13. (a) (i) Describe 'free market system'. (2 marks)
- (ii) Explain any **four** characteristics of a free market system. (8 marks)
- (b) (i) Distinguish between internal and external economies of scale of an organization. (4 marks)
- (ii) Explain any **three** factors that contribute to external economies of scale. (6 marks)
14. (a) Explain **five** contributions of the cooperative societies to the Kenyan economy. (10 marks)
- (b) (i) Define the term 'money supply'. (2 marks)
- (ii) Explain any **four** features that make money acceptable as a means of exchange. (8 marks)

15. (a) Define the term 'isoquant'. (2 marks)
- (b) (i) Distinguish between inflationary gap and deflationary gap. (4 marks)
- (ii) Using graphs describe the inflationary gap and deflationary gap. (10 marks)
- (iii) State any **four** measures to curb cost-push inflation. (4 marks)



THIS IS THE LAST PRINTED PAGE.

easytvvet.com